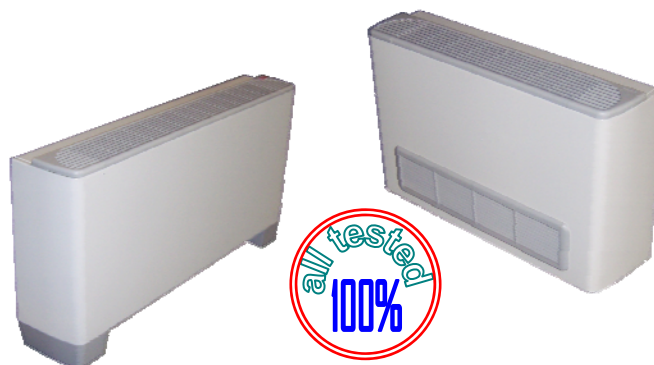


## FP 3.4 ÷ 20.4



The FP series water chilled fan coil units are designed specially to meet the varied requirements of zone cooling or heating using chilled water or hot water. Fan coil can be applied to two or four pipe systems to satisfy the requirements of a wide variety of air conditioning or heating application. The FP series is available in concealed and exposed versions for ceiling and floor installation. This unit is presented as a single block including: fan deck, cooling and/or heating coil, removable filter, drip tray, electrical connection box and decorative cabinet (excluded for concealed version).

### FEATURES

#### INSIDE UNIT

Panels and frame are made of galvanized steel, properly punched and punched for fixing both accessories and the unit itself, either to wall (vertical version) or ceiling (horizontal version).

#### HEATING COIL

The coils are made of seamless tubes expanded into aluminum fins in continuous block. The connections have brass headers with female fittings and provided with easily accessible vent and drainage valve.

#### FAN DECK

The fan decks are composed of double suction centrifugal fans with aluminum impellers and 3-speed fan motors. Each fan motor assembly is dynamically balanced.

#### FILTER

The easily removable filter is made of filtering honeycomb polypropylene fabric and supported by an aluminum or plastic frame.

#### DRIP TRAY

The drip trays are made from sheet metal treated with polyester powder coating to ensure total resistance to atmospheric agents. The "L" type tray makes the units suitable for both vertical and horizontal installation.

#### ELECTRICAL CONNECTION BOX

All electric wires are connected to enclosed electrical terminal block, situated on the opposite side to the water connections.

#### DECORATIVE CABINET

The decorative cabinet has a modern design that blends in with any environment. It's made from galvanized steel treated with polyester powder coating to ensure total resistance to rust, corrosion, chemical agents, aliphatic solvents and alcohols.

The discharge grille and supporting legs are made of ABS materials.

#### ON-BOARD THERMOSTART

**HL107DB:** for two pipe system exposed version use, working mode selection (OFF-Heating-Cooling), ventilation (HIGH-MED-LOW) and room temperature setting.

**HL107D4:** for four pipe system exposed version use, working mod selection (OFF-Heating-Cooling), ventilation (HIGH-MED-LOW) and room temperature setting.

#### OPTIONAL

- Condensation tray (water connection area)
- Different type thermostats with more advanced functions

### NOMENCLATURE

FP 5.1

- ① Fan coil
- ② Size
- ③ Installation method:  
W: Horizontal  
V: Vertical with supporting legs  
N: Vertical without supporting legs
- ④ Unit version  
C: Concealed version  
E: Exposed version

- ⑤ Air intake:  
--: Front air intake  
O: Underside air intake  
A: Back air intake
- ⑥ Air discharge:  
--: Top air discharge  
F: Front air discharge  
B: Underside air discharge
- ⑦ Water connection  
L: Left hand  
R: Right hand

- ⑧ Coil arrangement  
1: 2 pipe 2 rows  
2: 2 pipe 3 rows  
3: 2 pipe 4 rows  
4: 4 pipe 2+1 rows  
5: 4 pipe 3+1 rows
- ⑨ External static pressure  
--: Standard  
M: High static pressure (30Pa)  
H: High static pressure (50Pa)

## TECHNICAL DATA

Model	FP		3.4	5.1	6.8	8.5	10.2	13.6	17.0	20.4
2 pipe 3 rows	Air flow [m <sup>3</sup> /h]	H	340	510	680	850	1020	1360	1700	2040
		M	282	423	564	706	847	1129	1411	1693
		L	234	351	468	586	703	937	1171	1405
	Total cooling capacity * [W]	H	1800	2700	3600	4500	5400	7200	9000	10800
		M	1620	2430	3240	4050	4860	6480	8100	9720
		L	1458	2187	2916	3645	4374	5832	7290	8748
	Sensible cooling capacity * [W]	H	1307	1961	2615	3268	3922	5229	6537	7844
		M	1177	1765	2353	2942	3530	4706	5883	7060
		L	1059	1588	2118	2647	3177	4236	5295	6354
	Heating capacity * [W]	H	2700	4050	5400	6750	8100	10800	13500	16200
		M	2430	3645	4860	6075	7290	9720	12150	14580
		L	2187	3281	4374	5468	6561	8748	10935	13122
2 pipe 4 rows	Air flow [m <sup>3</sup> /h]	H	316	474	632	791	949	1265	1581	1897
		M	262	394	525	656	787	1050	1312	1575
		L	218	327	436	545	653	871	1089	1307
	Total cooling capacity * [W]	H	2142	3213	4284	5355	6426	8568	10710	12852
		M	1928	2892	3856	4820	5783	7711	9639	11567
		L	1735	2603	3470	4338	5205	6940	8675	10410
	Sensible cooling capacity * [W]	H	1556	2334	3111	3889	4667	6223	7779	9334
		M	1400	2100	2800	3500	4200	5601	7001	8401
		L	1260	1890	2520	3150	3780	5041	6301	7561
	Heating capacity * [W]	H	3213	4820	6426	8033	9639	12852	16065	19278
		M	2892	4338	5783	7229	8675	11567	14459	17350
		L	2603	3904	5205	6506	7808	10410	13013	15615
4 pipe 3+1 rows	Air flow [m <sup>3</sup> /h]	H	316	474	632	791	949	1265	1581	1897
		M	262	394	525	656	787	1050	1312	1575
		L	218	327	436	545	653	871	1089	1307
	Total cooling capacity * [W] 3R	H	1800	2700	3600	4500	5400	7200	9000	10800
		M	1620	2430	3240	4050	4860	6480	8100	9720
		L	1458	2187	2916	3645	4374	5832	7290	8748
	Sensible cooling capacity * [W] 3R	H	1307	1961	2615	3268	3922	5229	6537	7844
		M	1177	1765	2353	2942	3530	4706	5883	7060
		L	1059	1588	2118	2647	3177	4236	5295	6354
	Heating capacity * [W] 1R	H	810	1215	1620	2025	2430	3240	4050	4860
		M	729	1094	1458	1823	2187	2916	3645	4374
		L	656	984	1312	1640	1968	2624	3281	3937
Sound pressure level ** [dB(A)]	H	25.3	28.1	29.7	30.3	32.6	33.4	33.6	35.2	
	M	20.6	23.4	25.6	27.1	27.8	28.2	30.2	31.5	
	L	16.5	19.3	20.2	22.7	23.5	23.7	26.4	28.6	
Power supply	/	220V/1Ph/50Hz								
Water connection	/	3/4'								

a) The operating pressure of the appliance should be no more than 1.2MPa

b) \* The data are referred to the following conditions:

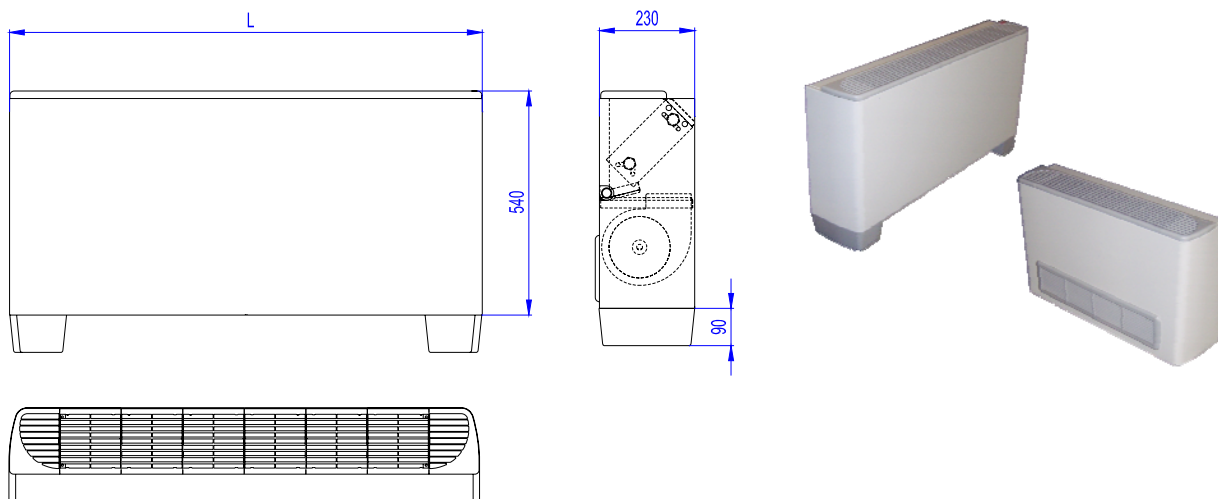
Cooling: room temperature: 27 °C 50% RH, water temperature: 7/12 °C, high speed.

Heating: room temperature: 21 °C, water inlet temperature: 60/50 °C, high speed.

\*\* Sound pressure measured in anechoic room 1.5 m away from the unit.

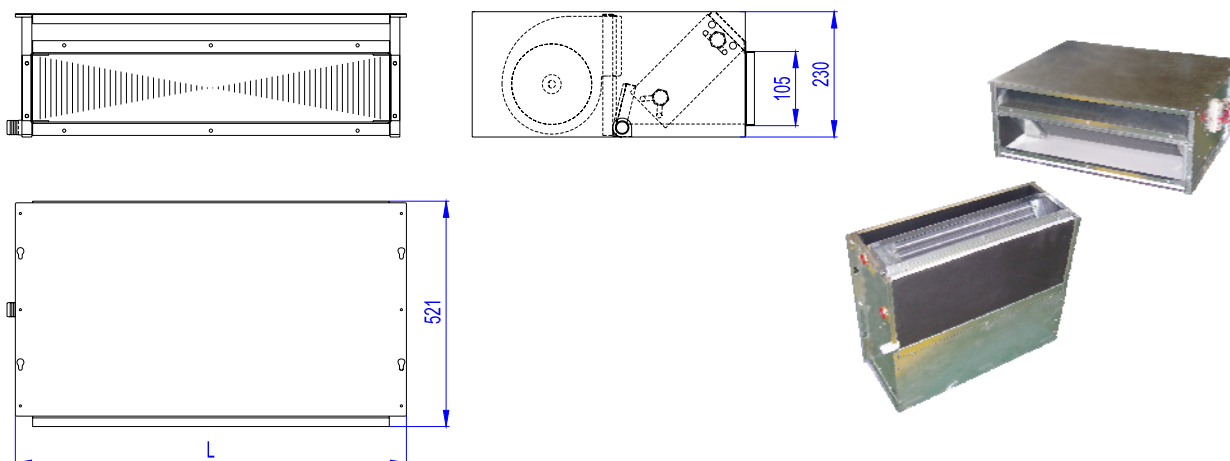
## OVERALL DIMENSIONS

### EXPOSED VERSION FP 3.4÷17.0



Model	FP-3.4	FP-5.1	FP-6.8	FP-8.5	FP-10.2	FP-13.6	FP-17.0
L	847	997	1147	1297	1447	1597	1897

### CONCEALED VERSION FP 3.4÷20.4



Model	FP-3.4	FP-5.1	FP-6.8	FP-8.5	FP-10.2	FP-13.6	FP-17.0	FP-20.4
L	622	772	922	1072	1222	1372	1672	1972

